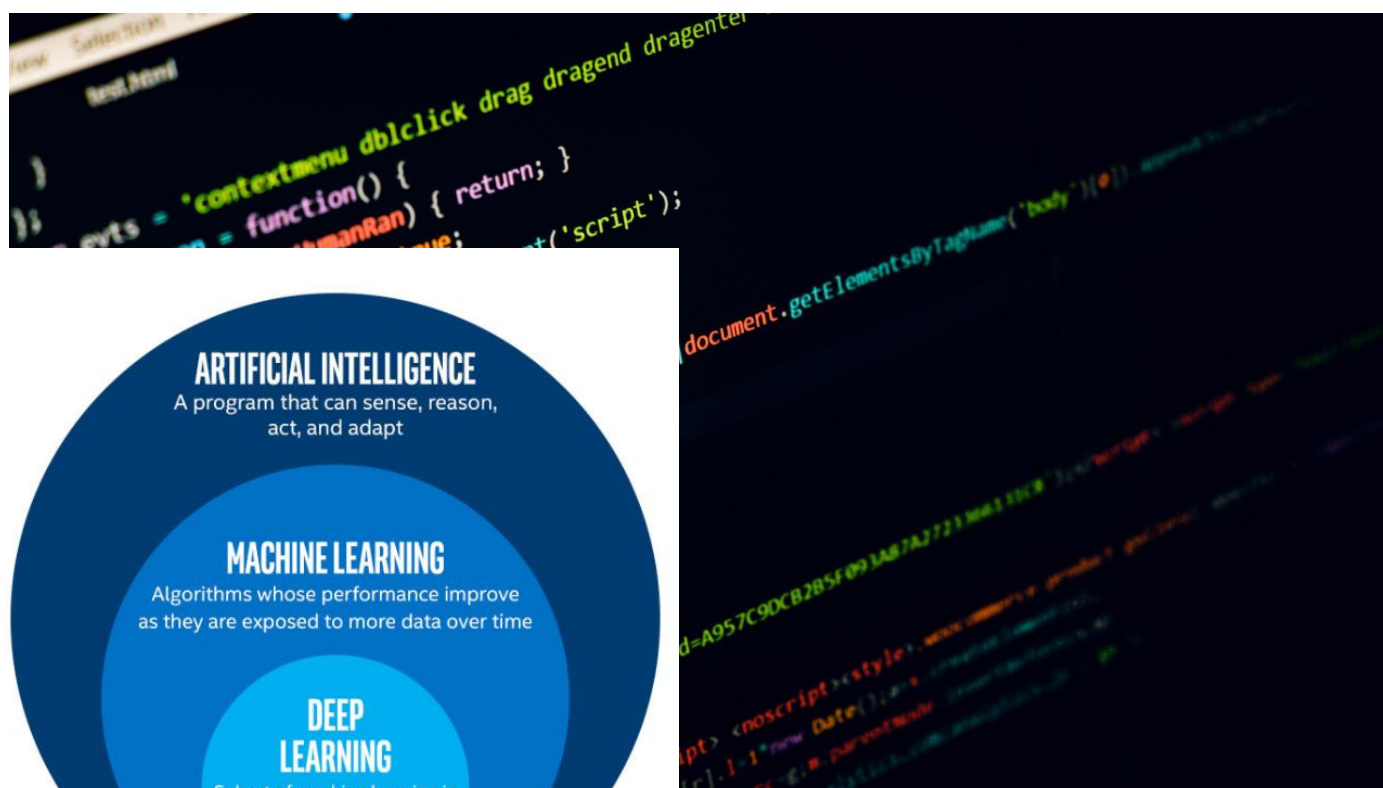




Certification Course on Machine Learning – Self Paced Course



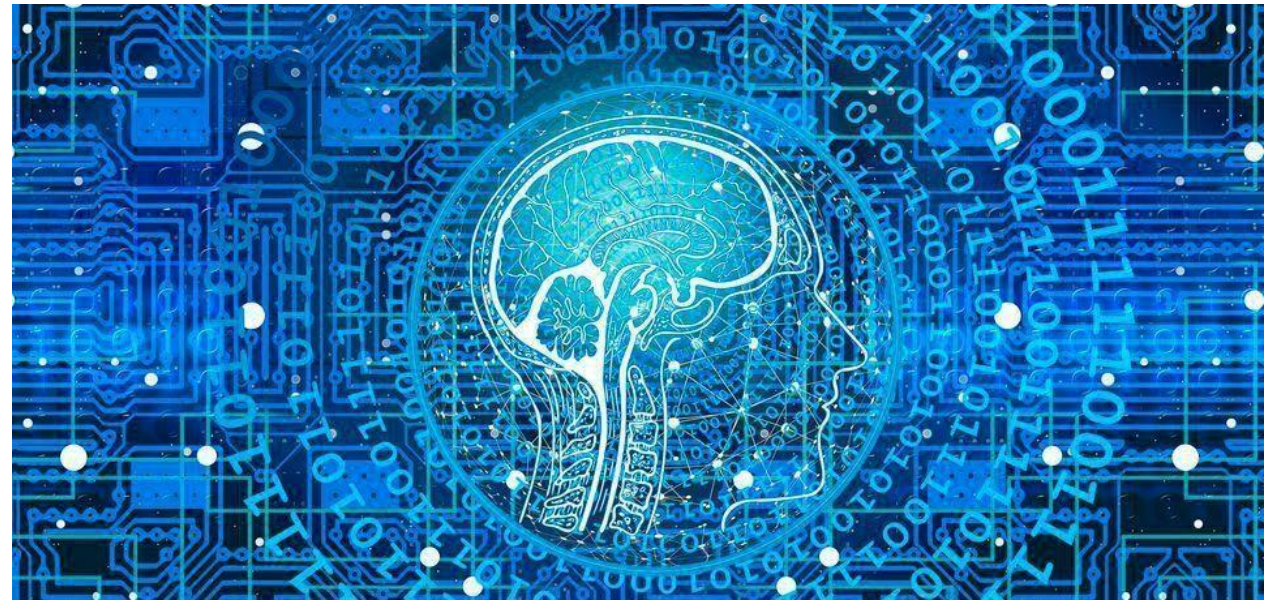


Topics Covered Cont.

- **Introduction:** Machine learning (ML) Landscape: what is ML?, Why, Types of ML, main challenges of ML introduction to Python & Pytorch programming, Python libraries: Numpy, Pandas, Keras, TensorFlow, Scikit Learn, Matplotlib and other libraries will be covered in detail
- **Exploratory Data Analysis :** Numeric Data, Image Data, Unstructured Data, Time Series Data: Statistical Inference, Data Preparation, Exploratory Data Analysis on Text Data, Medical Image Data, Numerical Data, Time Series Data will be covered in detail along with end to end execution of machine learning project.
- **End to end Machine learning Project:** Working with real data, Look at the big picture, Get the data, Discover and visualize the data, Prepare the data, select and train the model, Fine tune your model Classification: MNIST, training a Binary classifier, performance measure, multiclass classification, error analysis, multi label classification, multi output classification.
- **Training Models:** Linear regression, gradient descent, polynomial regression, learning curves, regularized linear models, logistic regression Support Vector Machine: linear, Nonlinear , SVM regression.
- **Decision Trees :** Training and Visualizing DT, making prediction, estimating class, the CART training, computational complexity, GINI impurity, Entropy, regularization Hyper parameters, Regression, instability Ensemble learning and Random Forest: Voting classifiers, Bagging and pasting, Random patches, Random forests, Boosting, stacking.
- **Hands on training** on Python packages, Pytorch Programming, guided hands on project sessions

Course Outcomes

1. Learners will get good understanding of Machine Learning Concepts along with associated mathematical frame work.
2. Will be able to code standard machine learning algorithms using Python.
3. Will get good exposure in using various python libraries.
4. Will be able to execute End to End Machine learning project.
5. Will have an added edge in carrier and facing interviews.



Fee Details

- Access to our video lectures and study materials will be provided via Google Classroom.
- Cost of the program – Rs 4130 /- only (Inclusive of GST)
- Completion Certificate will be provided at the end of the training program
- Doubt Clearing sessions will be held and WhatsApp/Email support is provided for doubt clearing.
- Payment must be made preferably via online transfer to

OPPENFYNN INNOVATION LABS (GSTIN: 29AAHFO2616F1ZB)

Bank : IDBI Bank , Yelahanka Branch, Bangalore

Current Account No: 0694102000014076

IFSC Code: IBKL0000694 or

Gpay to +918971876135

Program Name	Price -Self Paced
Machine Learning	INR 4130 (GST included)